

PERFORMANCE INVESTIGATION OF SINGLE CYLINDER TWO STROKE PETROL ENGINE WITH DIFFERENT SPARK TIMING AND SPARK PLUGS

Mr. Jignesh S. Patel

ME IC Engine and Automobile Engineering, Laljibhai Chaturbhai Institute of Technology
Bhandu, Mahesana

Abstract: In present days an automobile engine has to satisfy the strict environmental constraints and fuel economy standards in addition to meeting the competitiveness of the world market. Today the automobile engines have synthesized the basic knowledge of many disciplines like thermodynamics, fluid flow, combustion, chemical kinetics and heat transfer. Now-a-days internal combustion engines play an important role in automobile field. There are various factors that influence the performance of engine such as compression ratio, ignition timing, quality of fuel, combustion rate, air fuel ratio, intake temperature and pressure and also based on piston design, inlet manifold, and combustion chamber designs etc. Growing demand on reduction of internal combustion engine fuel consumption with increase of its performance new designs and optimization of existing ones are introduced. Spark plug in SI engine influences the quality of spark produce for ignite the air/fuel mixture in the combustion chamber. Ignition timing plays an important role in complete combustion of air/fuel and helps to reduce pollution. In present work a single cylinder 145.45 cc petrol engine is used to investigate the performance characteristics. The main objective of this work is to study the effect of the spark plug and spark timing on performance and pollution of the single cylinder petrol engine at different loading condition.

Index Terms: Spark ignition (SI), Wide open throttle (WOT), Liquefied petroleum gas (LPG), Brake-specific fuel consumption (BSFC), Bottom dead center (BDC)

I. INTRODUCTION

A spark plug (sometimes, in British English, a sparking plug, and, colloquially, a plug) is a device for delivering electric current from an ignition system to the combustion chamber of a spark-ignition engine to ignite the compressed fuel/air mixture by an electric spark, while containing combustion pressure within the engine.

Parts of Plug

- Terminal
- Insulator
- Ribs
- Insulator tip
- Seals
- Metal case/shell
- Central electrode
- Side (ground, earth) electrode

Spark Plug Gap

Spark plugs are typically designed to have a spark gap which can be adjusted by the technician installing the spark plug, by bending the ground electrode slightly. The same plug may be specified for several different engines, requiring a different gap for each. Spark plugs in automobiles generally have a gap between 0.024"-0.070" (0.6-1.8 mm). The gap may require adjustment from the out of the box gap.

Ignition Timing

Ignition timing, in a spark ignition internal combustion engine (ICE), is the process of setting the angle relative to piston position and crankshaft angular velocity that a spark will occur in the combustion chamber near the end of the compression stroke.

II. LITERATURE SURVEY

Indira Priyadarsini et al. [2] have worked on the importance of design variables of I.C. engine for better performance with fewer emissions. The spark timing and compression ratio are the two important design variables to deal with for effective performance of engine. This paper presents the effects of spark timing and compression ratio on the performance of a four stroke single-cylinder spark ignition engine. The study evaluated results of research in the area of spark ignition engine and is assessed by studying its performance characteristics relative to find the optimum. Experiments were conducted at different ST of 200 to 300 BTDC and CR of 3.5 to 9. The results have shown that performance parameters: brake thermal efficiency and volumetric efficiency increased for advanced timing.

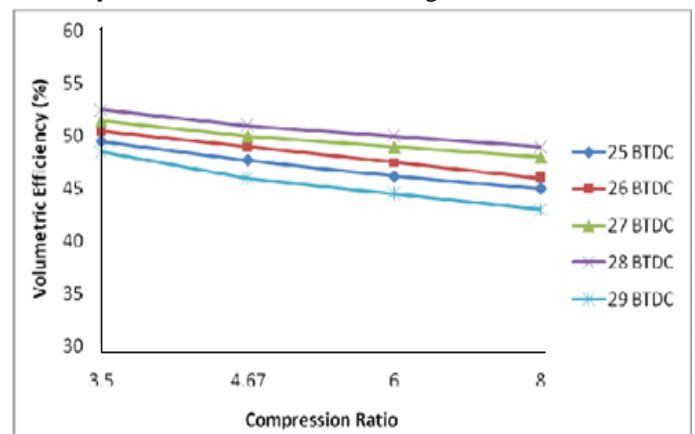


Fig. 1 Compression ratio Vs Volumetric efficiency

Specific fuel consumption and exhaust gas temperature decreased with earlier timing before top dead centre.

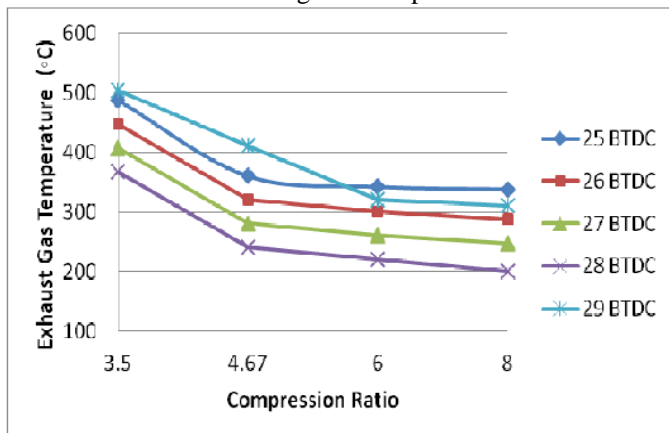


Fig. 2 Compression ratio Vs Exhaust gas temperature

The peak pressure increases with increasing spark advance. The increased compression ratio results increased BTE and EGT increased and then decreased. BSFC decreased with increased compression ratio. The engine for tests used was variable compression ratio engine with adjustable dome head with wheel. The setup is running at constant speed of 3000rpm with water cooling system. The purpose of spark advance mechanism is to assure that under every condition of engine operation, ignition takes place at the most favorable instant in time. Increasing the compression ratio below detonating values to improve on the performance is another choice of variable. Increased fuel mileage, performance and reduction in emissions are just some of the benefits as the ignition timing can be advanced or retarded to prevent engine detonation. Higher compression ratios will however make gasoline engines subject to engine knocking if lower octane-rated fuel is used, also known as detonation. The best results were obtained at 28°BTDC for compression ratio of 8:1 at 3000RPM.

III. PROPOSED METHODOLOGY

From the literature survey, identified following parameters for my dissertation work:

1) Use of Different Spark Plugs

Different types of spark plug are available in market. we use this advance spark plug in the two stroke single cylinder spark ignition engine. We will use platinum tip spark plug, double platinum tip spark plug, iridium tip spark plug and copper tip spark plug which is in use now in two stroke spark ignition engine. It represents, increase the life of spark plug of the engine, reduce the fuel consumption and also minimization of emissions formation with good balance of cost.

2) With Varying Ignition Timing

From the literature survey it is concluded that the need for advancing the timing of the spark is because fuel does not completely burn the instant the spark fires, the combustion gasses take a period of time to expand, and the angular or rotational speed of the engine can lengthen or shorten the

time frame in which the burning and expansion should occur. The ignition timing affects many variables including engine longevity, fuel economy, and engine power. So the selected different spark plugs are checked with changing the ignition timing.

3) Engine Load

From literature review we can consider engine load as parameter and measure the performance and emission characteristics for different engine speed.

4) Spark Gap

Spark plugs are typically designed to have a spark gap which can be adjusted by the technician installing the spark plug, by bending the ground electrode slightly. The same plug may be specified for several different engines, requiring a different gap for each. Spark plugs in automobiles generally have a gap between 0.3 mm to 0.7 mm.

Objectives of Research

Many researcher work on four stroke SI engine but only few were worked on two stroke SI engine. With high power to weight ratio, simple design, low maintenance more interest on two stroke engine deserve. The main aim of this work is improve efficiency and performance and reduce exhaust emission of two stroke petrol engine by using different spark plugs and varying ignition timing and spark gap.

IV. CONCLUSIONS

To get maximum out of the Engine, it is required to optimize each and every parameter of the Engine operation. From literature survey it is concluded that combustion is the integrated and important portion of the engine study. In SI Engines, combustion is initiated by the Spark plug and the effectiveness of the combustion will depend upon the type of spark plug and the spark timing. From literature review, many researcher worked on four stroke SI engine but few were worked on two stroke SI engine. With their simple design, low cost to rebuild- maintain and offer high power to weight ratio two stroke SI engine deserve attention. Ignition timing and spark plug play a very significant role in the performance prediction. These prospects of improving the emission and performance have generated impetus to active research on low emission and efficient engine appropriately. So with this aim, this experiment will aim to study effect on performance and emissions results of different types of spark plugs at varying ignition timing for two stroke single cylinder petrol engine. Different types of spark plugs are used for experiment. Test will done with specific type of spark plug at different ignition timing at 0 (no load), 25, 50, 75, 100% (full load) load verses brake power, brake thermal Efficiency, Specific fuel consumption & also for emission results. So, as per the previous research and our aim of application of modification in engine will yield favourable and positive results as for as performance characteristics and emission characteristics are concerned.

REFERENCES

- [1] J. Arroyo, F. Moreno, M. Munoz and C. Monne , " Experimental study of ignition timing and supercharging effects on a gasoline engine fueled with synthetic gases extracted from biogas." Science direct, Energy Conversion and Management 2015, 97, 196 - 211
- [2] Indira Priyadarsini, M. V. S. Murali Krishna and E. Nirmala Devi," Study of impact of spark timing and compression ratio on performance of SI engine." IJRTE, 2015, 6 2277-3878
- [3] Zo Zhang, Changwai Ji and Shoufeng Wang," Combustion analysis and emissions characteristics of a hydrogen-blended methanol engine at various spark timings." Sciencedirect, International journal of hydrogen energy, 2015, 40, 4707-4716
- [4] Baris, Erkus, M. Ihsan Karamangil and Ali Surmen," Enhancing the heavy load performance of a gasoline engine converted for LPG use by modifying the ignition timings." Sciencedirect, Applied Thermal Engineering, 2015, 85, 188-194
- [5] Nguyen Ba Hung, Ocktaeck Lim and Norimasa Iida," The effects of key parameters on the transition from SI combustion to HCCI combustion in a two-stroke free piston linear engine." Sciencedirect, Applied Energy, 2015, 137, 385-401
- [6] Fukang Ma, Changlu Zhao and Shuanlu Zhang," Study on dual-spark ignition rapid combustion characteristic of opposed-piston two-stroke GDI engine." Sciencedirect, Energy Procedia, 2014, 61, 722-725
- [7] Jongtai Lee, Kwangju Lee, Jonggoo Lee and Byunghoh Anh," High power performance with zero NOx emission in a hydrogen-fueled spark ignition engine by valve timing and lean boosting," Sciencedirect, Fuel, 2015,128, 381-389
- [8] K. Kishor, M.V.S. Murali Krishna and P.V.K. Murthy," Comparative studies on performance parameters and exhaust emissions from four stroke copper coated spark ignition engine with alcohol blended gasoline with catalytic converter,"IJRSET, 2013, 2319-8753
- [9] J. Arun, S. Pravin Kumar, M. Venkatesh and A.S. Giridharan," Reliability study on spark plugs using process failure mode and effect analysis." IGERD, 2013, 13-81
- [10] Narasimha Bailkeri, Krishna Prasad S and Shrinivasa Rao B.R," Performance study on twin plug spark ignition engine at different ignition timings,"IJSR, 2013, 2319-7064
- [11] Ahmed A. Abdel-Rehim," Impact of spark plug number of ground electrodes on engine stability," Sciencedirect, Ain Shams Engineering Journal, 2012, 4, 307-316
- [12] CenK Sayin," The impact of varying spark timing at different octane numbers on the performance and emission characteristics in a gasoline engine." Sciencedirect, Fuel, 2012, 97, 856-861
- [13] Kariya-shi Aichi-ken," Development of long life and high ignitability iridium spark plug," FISIT, 2000
- [14] " Spark plug "August 2015, https://en.wikipedia.org/wiki/spark_plug
- [15] " Spark timing " August 2015, https://en.wikipedia.org/wiki/ignition_timing